

TIME  
+  
TIDE

# TIME + TIDE KAKULI CAMP

*Comfort and Tranquility Amid  
Panoramic River Views*

## SOUTH LUANGWA, ZAMBIA



# TIME + TIDE KAKULI CAMP

## HIGHLIGHTS

- + *Amazing views of the Luangwa River*
- + *Prolific leopard sightings – 9 in one drive!*
- + *Carmine bee-eater colony nearby*

Perched high above the Luangwa River, Time + Tide Kakuli offers impressive vistas of the river and its many visitors below. Designed to celebrate the panoramic riverside setting, the suites have a long, low profile and a bright, airy design. The chitenge (main area) overlooks a permanent waterhole and the river beyond, promising game viewing right from the comfort of camp. Take in the panoramic views of the river and listen to the calls of nearby hippos while giraffes and elephants stop by for a drink. Slow down, unwind and fully immerse into this extraordinary, wild land.



# CAMP DETAILS

## THE SUITES

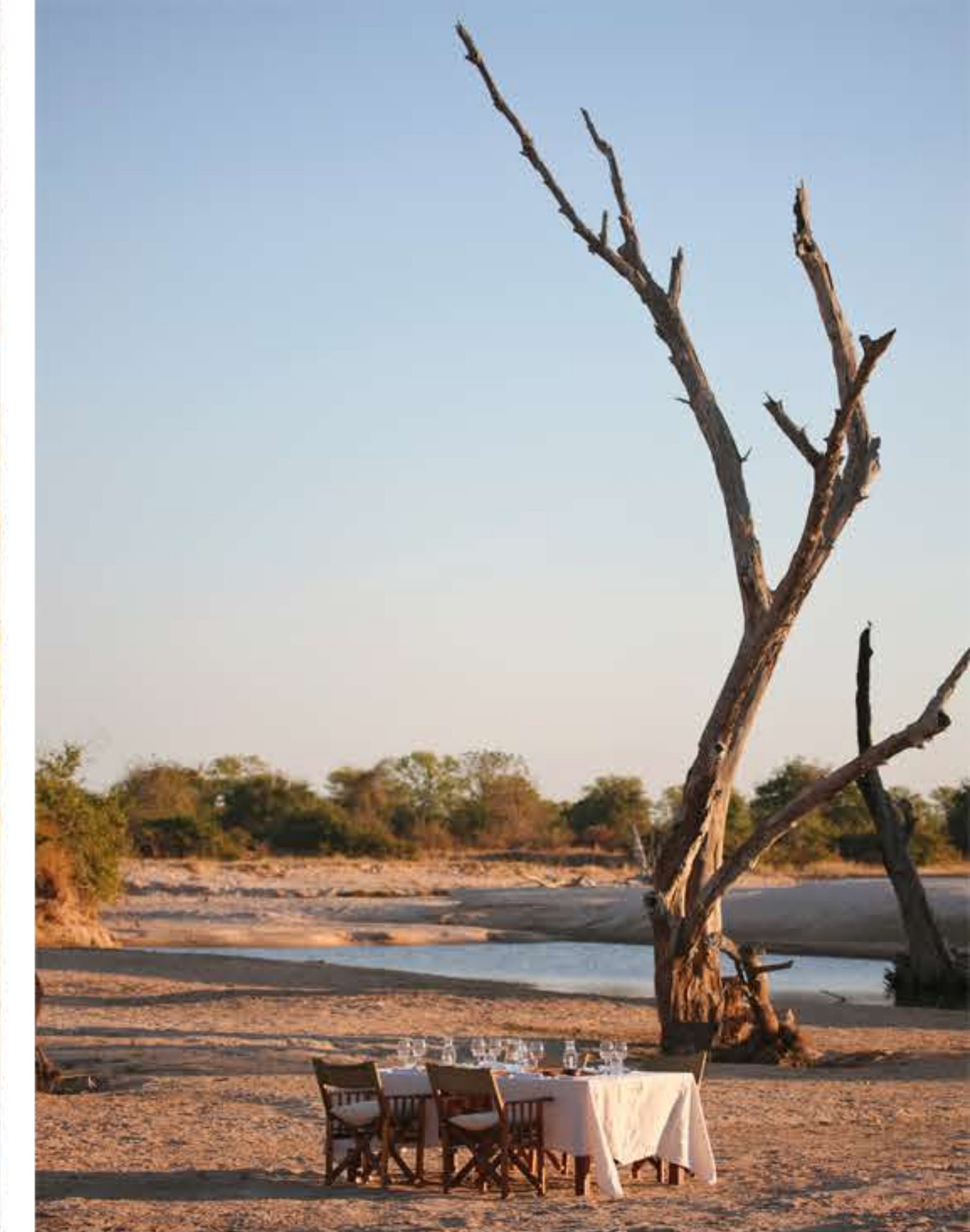
- + 4 suites - one bed, one bath
- + 1 family suite - two bed, two bath
- + Indoor and outdoor showers
- + Private verandah with sweeping views
- + Double or twin configuration
- + Fans in the bedrooms
- + Solar power, British three pin plugs in main lounge
- + No wifi and phone signal
- + Main lodge - dining area, lounge, bar, campfire and wildlife hide

## RATES

- + \$695 to \$950 per person per night, depending on season
- + \$100 pppn park and conservation fees
- + Includes all meals, accommodation, game viewing activities, standard bar drinks, laundry + airport/local transfers

## NEED TO KNOW

- + Open 20 Jan to 4 April, 20 May to 7 Nov
- + Minimum age 8
- + 2.5 hr game drive transfer from Mfuwe
- + 2 hr boat transfer during Secret Season



As the peak dry season, October and November are a great time to see predator action as animals concentrate around dwindling water sources.



From October to April is the best time of year to see endangered wild dogs.



# GREAT ALL YEAR

- + River crossings of large herds of elephants
- + Incredible leopard and lion sightings
- + Wildlife photography - still a wild land devoid of crowds that is great for photography



With the Luangwa River flowing at its highest levels, the Secret Season is perfect for exploring by boat and foot



September to November is the best time of year to see the iconic carmine bee-eaters nesting in the dry riverbanks.

# TIME + TIDE KAKULI CAMP

SOUTH LUANGWA NATIONAL PARK



July to October is peak season for our Sleepout Under the Stars.



With many migrant species flocking to the river, this is an excellent time for birdwatching.



Lion sightings pick up as the seasonal rains recede.

## \$695 - \$950

PER PERSON, PER NIGHT  
DEPENDENT ON SEASON

- + \$100 pppn park & conservation fees
- + Includes all meals, accommodation, game viewing activities, standard bar drinks, laundry + air/local transfers



## ON SAFARI

*South Luangwa National Park*

### ACTIVITIES

- + Day and night game drives
- + Walking safaris
- + Sleepout Under the Stars \*
- + Boating safaris (Jan to April)



During the dry season, Time + Tide Kakuli is a great base for exploring by vehicle and on foot. During our Secret Season, it is the only camp to offer boating on the Luangwa River. Diverse habitat supports a wide variety of plains game and birdlife alongside the predators attracted to the abundance. The surroundings are renowned for leopard and lion sightings. It is also one of the best camps in the park to see the iconic carmine bee-eaters. In the South Luangwa, expect large herds of elephants and rivers packed with hippos and crocs.

\* Supplementary charges may apply



# WEATHER IN THE SOUTH LUANGWA

Month	Max Daily Temp	Min Daily Temp	Avg Rainfall
JANUARY	31°C / 89°F	20°C / 68°F	230 mm
FEBRUARY	31°C / 89°F	20°C / 68°F	220 mm
MARCH	31°C / 89°F	20°C / 68°F	60 mm
APRIL	31°C / 89°F	19°C / 66°F	-
MAY	28°C / 82°F	15°C / 59°F	-
JUNE	28°C / 82°F	10°C / 50°F	-
JULY	28°C / 82°F	10°C / 50°F	-
AUGUST	30°C / 86°F	14°C / 57°F	-
SEPTEMBER	30°C / 86°F	14°C / 57°F	-
OCTOBER	40°C / 104°F	22°C / 72°F	10 mm
NOVEMBER	40°C / 104°F	22°C / 72°F	50 mm
DECEMBER	38°C / 100°F	22°C / 72°F	100 mm



## WINE + DINE

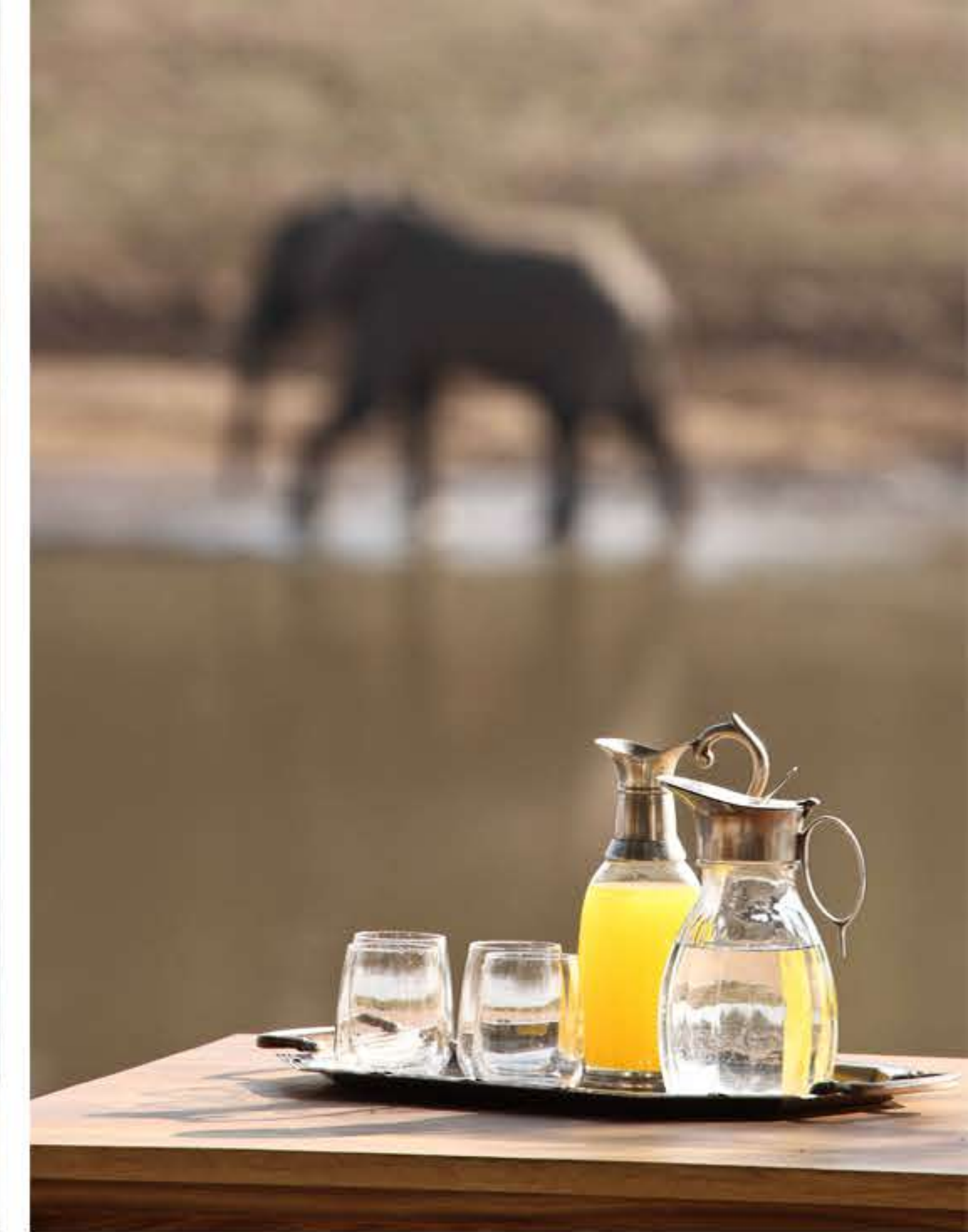
*Fine dining amid wild beauty*

### FINE DINING

Amid the wild bush setting, our award winning culinary team creates an extraordinary dining experience that blends expert culinary skills, impeccable service and artful plating. Our dishes draw from the rich cultural and natural heritage of Zambia by featuring our vibrant flavours, produce and traditions. By bringing together the best of Zambia with inspiration from around the world, we create a dining experience that appeals to our international clientele, while retaining its wonderful Zambian authenticity.

### REFRESHMENTS

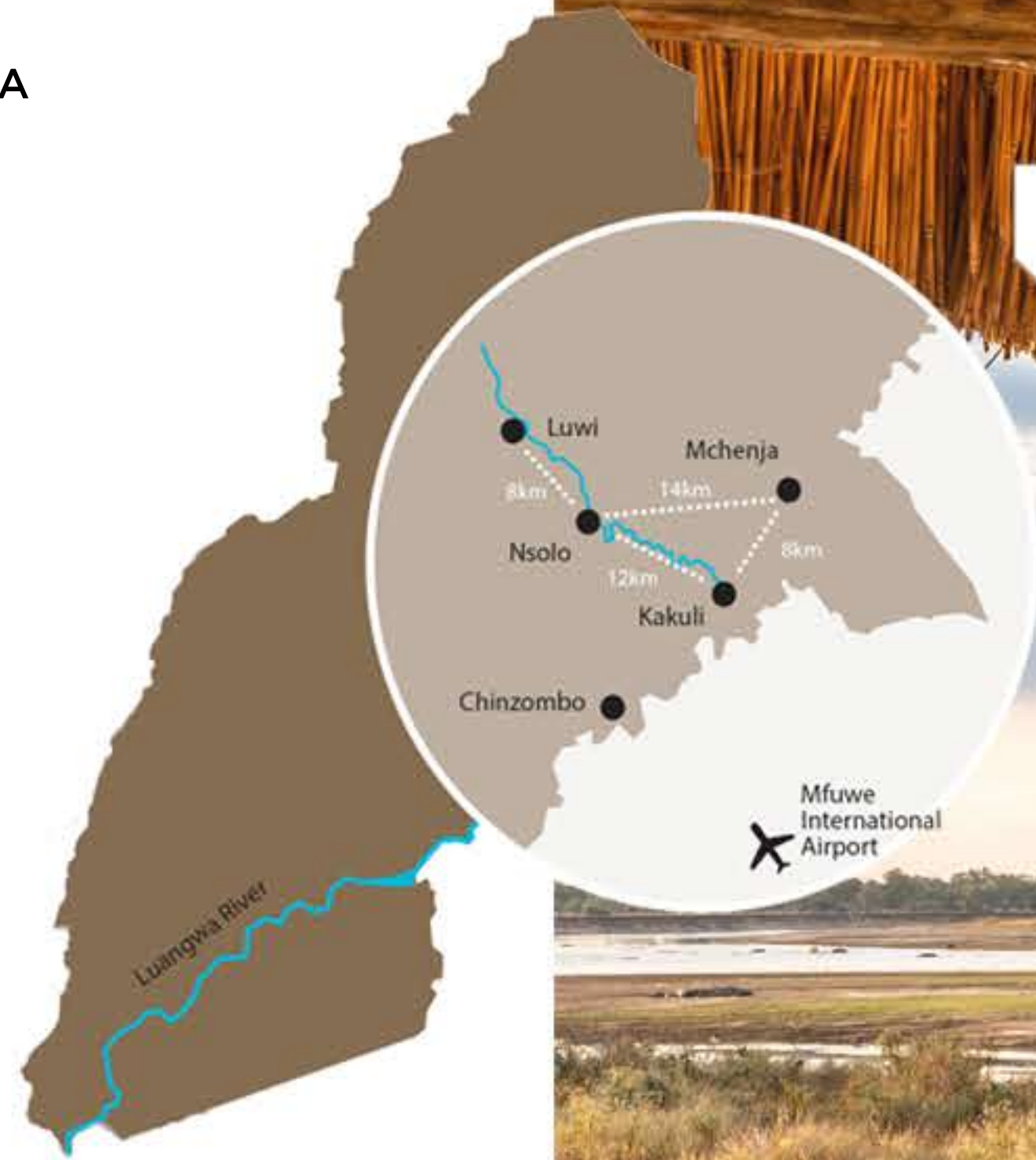
At the end of a lively day on safari, enjoy a sundowner, a cherished African tradition. Whether you prefer a crisp gin and tonic or a local beer, our excellent barstaff have got you covered!



SOUTH LUANGWA, ZAMBIA

# GETTING THERE

12°59'46.2"S  
31°53'45.1"E



## SOUTH LUANGWA FLIGHTS

Lusaka to Mfuwe (1 hr)

Royal Airstrip to Mfuwe (1.5 hrs, via Lusaka)

Lilongwe to Mfuwe (1 hr)

Livingstone to Mfuwe (2 hrs, via Lusaka)

Kalabo Airstrip to Mfuwe (4 hrs, via Livingstone)

Johannesburg to Mfuwe (3 hrs, private charter)

## DISTANCE BETWEEN THE TIME + TIDE CAMPS

Chinzombo to each seasonal camp (20 km)

Luwi to Nsolo (8 km)

Kakuli to Nsolo (12 km)

Nsolo to Mchenja (14 km)

Mchenja to Kakuli (8 km)



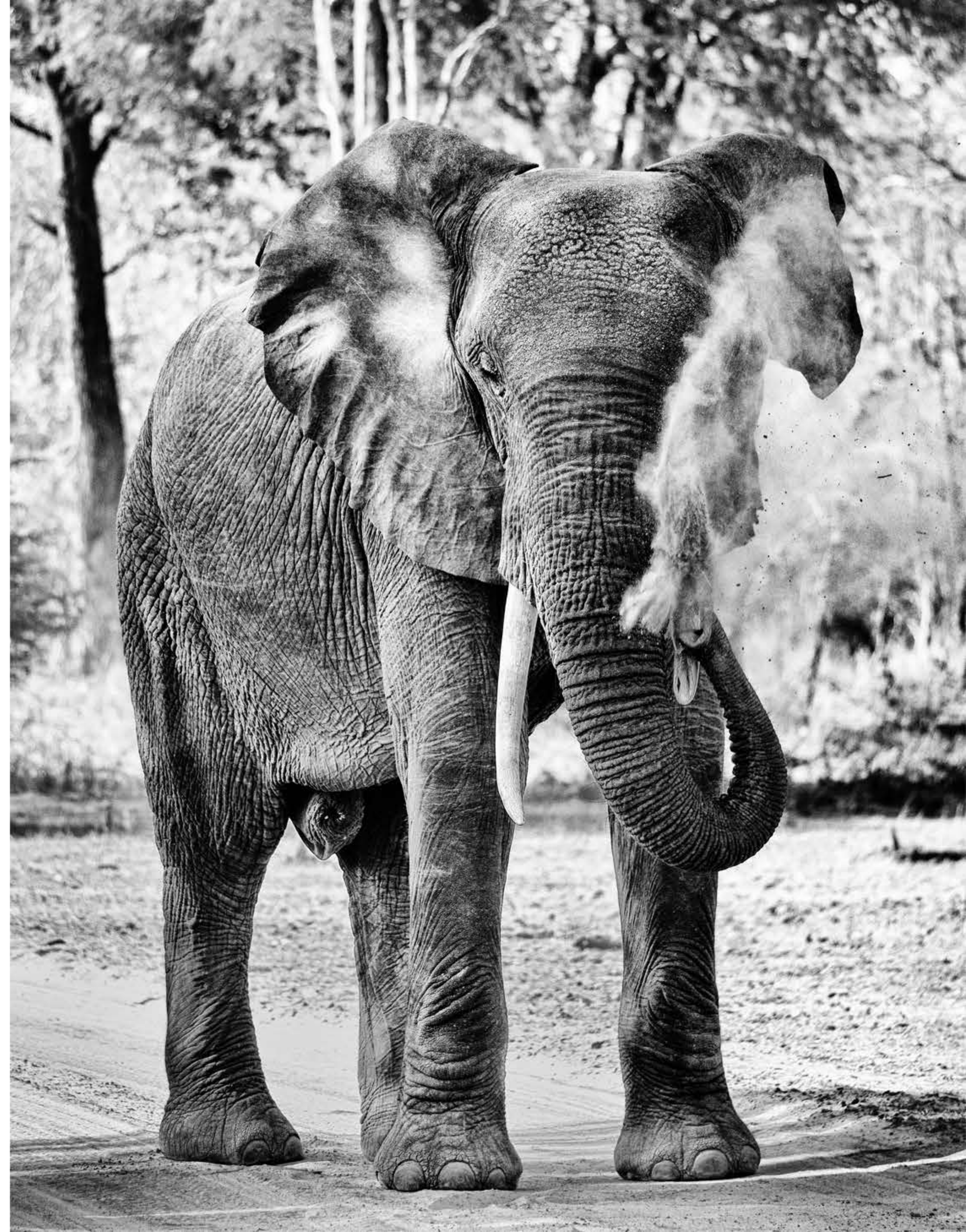




## JOURNEYS

Join Time + Tide on the road less travelled with our collection of signature Journeys featuring Time + Tide Kakuli Camp:

- + Rivers + Rainbows
- + In Norman Carr's Footsteps
- + Great Parks of Zambia
- + Week on the Wildside
- + Two Rivers
- + Family Adventures



TIME  
TIDE

*Journeys Destinations Experiences*



# CONTACT US

*Time and tide wait for no man,  
start your journey today*

T: +230 525 04354 / +230 525 04359  
travel@timeandtideafrica.com  
timeandtideafrica.com